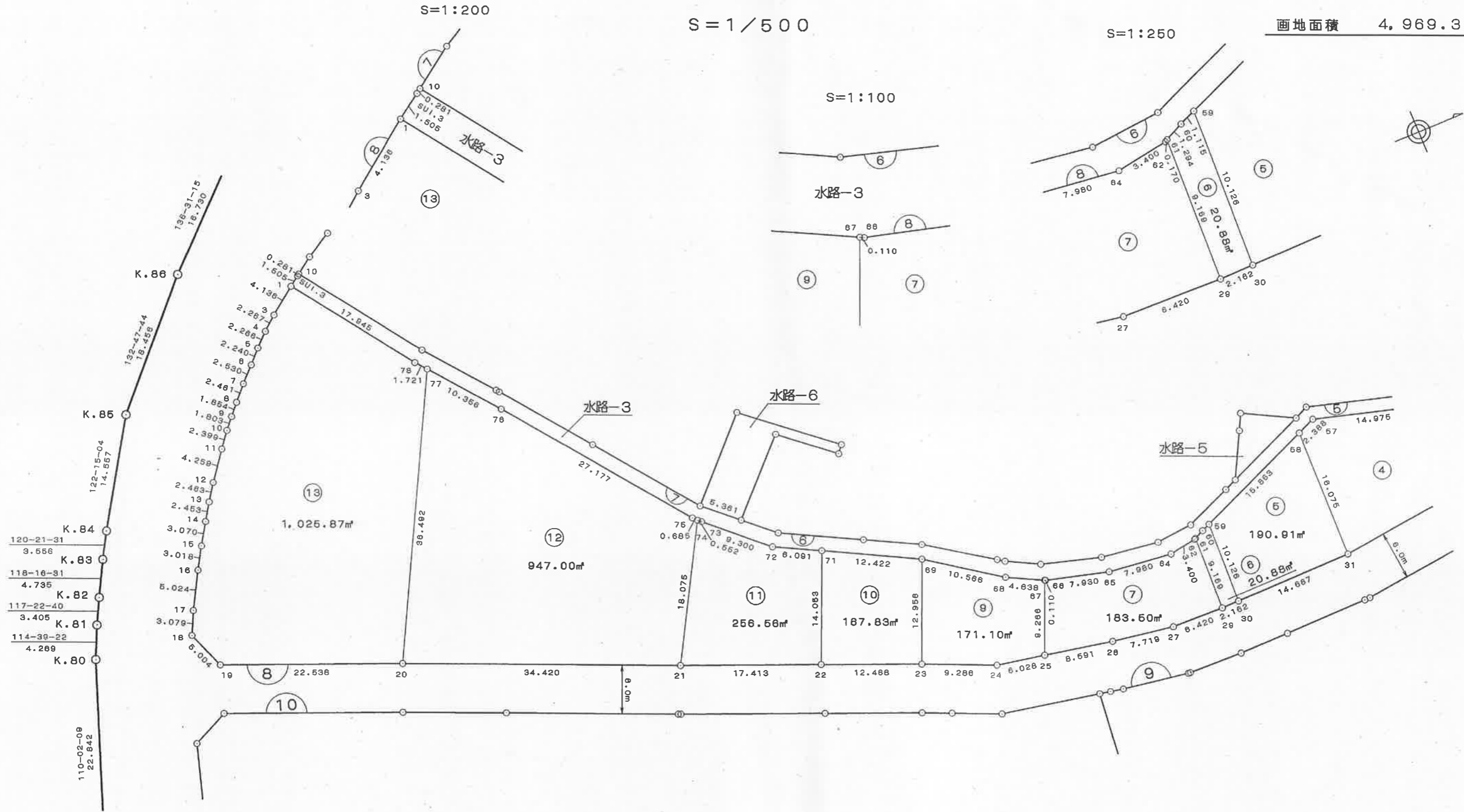
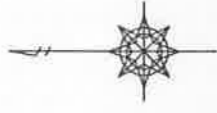


出来形確認測量図

街区面積 4,969.35 m²
 画地面積 4,969.31 m²



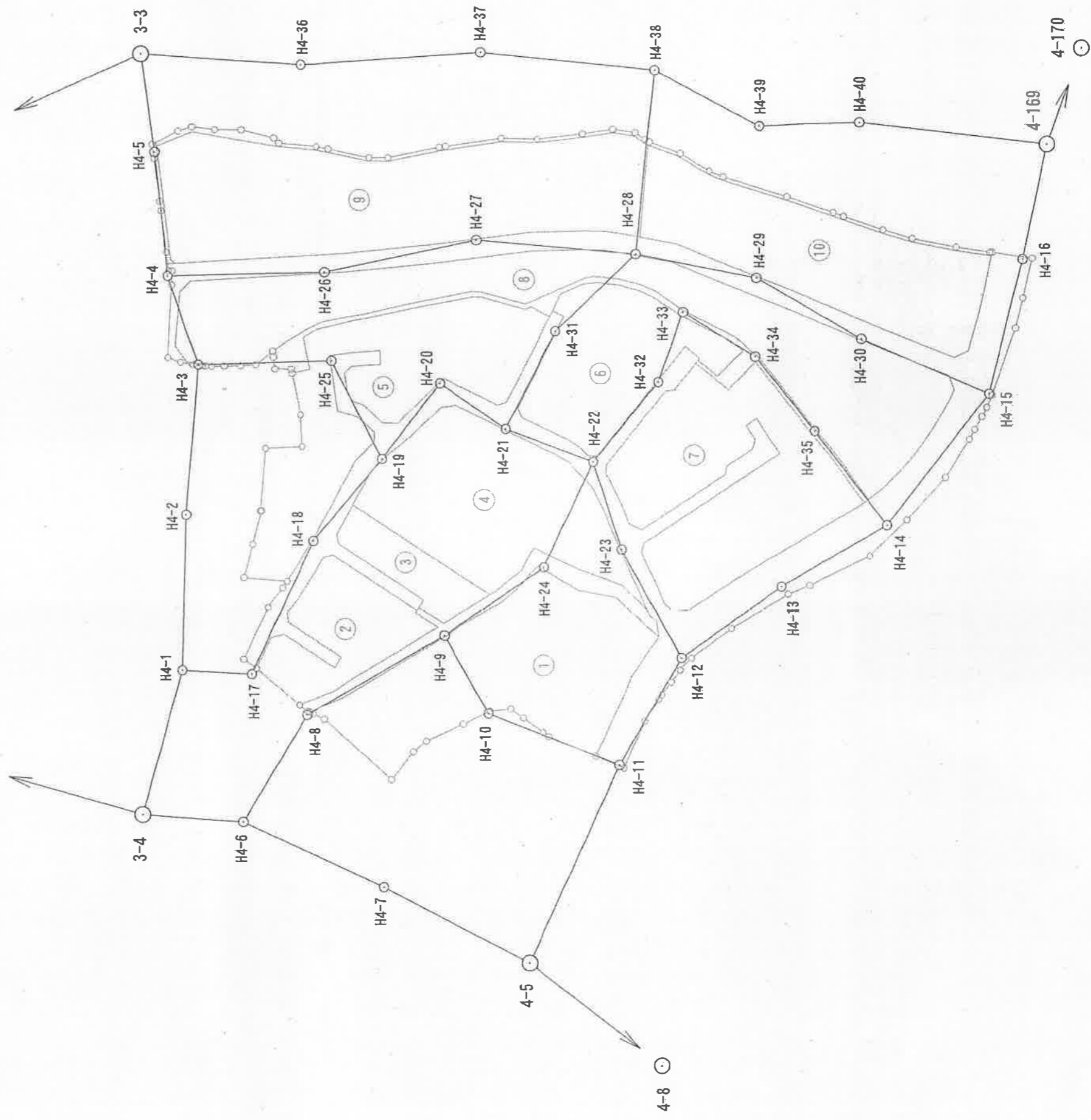
平成25年度 栃木県宇都宮市平松本町 平松本町第三地区
4級基準点測量 位置図



S=1:1500

3-1

3-2



座標面積計算書

12

[地番：8B-13
点名

地目：

点名	水平角	距離	方向角	d x	d y	X	Y	X-X	Y (X-X)
8B1	89-19-55	17.945	233-59-02	-10.552	-14.515	59800.075	6829.987	-13.869	-94725.089703
8B3	176-56-48	4.136	143-18-57	-3.317	2.471	59796.758	6832.458	-5.060	-34572.237480
8B4	176-44-27	2.367	140-15-45	-1.743	1.449	59795.015	6833.907	-3.400	-23235.283800
8B5	176-34-04	2.266	137-00-12	-1.657	1.545	59793.358	6835.452	-3.201	-21880.281852
8B6	182-16-40	2.240	133-34-16	-1.544	1.623	59791.814	6837.075	-3.359	-22965.734925
8B7	177-10-30	2.530	135-50-56	-1.815	1.762	59789.999	6838.837	-3.494	-23894.896478
8B8	178-41-49	2.461	133-01-26	-1.679	1.799	59788.320	6840.636	-2.913	-19926.772668
8B9	178-41-27	1.854	131-43-15	-1.234	1.384	59787.086	6842.020	-2.403	-16441.374060
8B10	177-50-03	1.803	130-24-42	-1.169	1.373	59785.917	6843.393	-2.654	-18162.365022
8B11	178-54-04	2.399	128-14-45	-1.485	1.884	59784.432	6845.277	-4.057	-27771.288789
8B12	177-14-00	4.259	127-08-49	-2.572	3.395	59781.860	6848.672	-3.963	-27141.287136
8B13	178-23-24	2.463	124-22-49	-1.391	2.033	59780.469	6850.705	-2.719	-18627.066895
8B14	179-36-18	2.453	122-46-13	-1.328	2.063	59779.141	6852.768	-2.972	-20366.426496
8B15	178-32-58	3.070	122-22-31	-1.644	2.593	59777.497	6855.361	-3.195	-21902.878395
8B16	178-29-52	3.018	120-55-29	-1.551	2.589	59775.946	6857.950	-4.019	-27562.101050
8B17	176-06-38	5.024	119-25-21	-2.468	4.376	59773.478	6862.326	-3.795	-26042.527170
8B18	133-16-33	3.079	115-31-59	-1.327	2.778	59772.151	6865.104	0.482	3308.980128
8B19	133-07-51	5.004	68-48-32	1.809	4.666	59773.960	6869.770	22.715	156046.825550
8B20	95-34-39	22.538	21-56-23	20.906	8.421	59794.866	6878.191	37.766	259761.761306
8B77	112-48-34	36.492	297-31-02	16.860	-32.364	59811.726	6845.827	15.761	107897.079347
8B78	183-39-26	1.721	230-19-36	-1.099	-1.325	59810.627	6844.502	-11.651	-79745.292802
								倍面積	2051.741610
								面積	1025.8708050